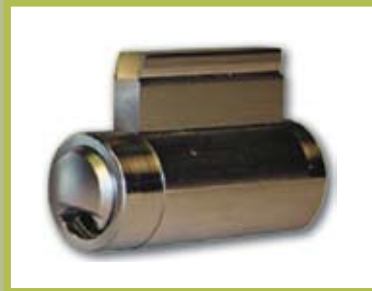




# Looking for an electronic cabinet lock solution?

Olympus Lock offers a wide range of cabinet locks for popular third party electronic cylinders.



**OLYMPUS**  
**LOCK, INC.**  
*The cabinet lock innovators.*



# Olympus Cabinet Lock Options for use with: Medeco LOGIC, Medeco Nextgen XT, ASSA CLIQ and VIDEX CyberLock electronic cylinders.

## Large Pin Locks ▼



## Large Pin Locks

Olympus offers a variety of commercial, less cylinder cabinet locks that accept Schlage-compatible key-in-knob cylinders. All of our large pin locks include our patented rekeyability features.

*Use with Medeco LOGIC, ASSA CLIQ or VIDEX CyberLock key-in-knob cylinders.*

## Small Format IC Core

Olympus has a wide selection of small format IC core cabinet locks that will accept Best, Arrow, Falcon or equivalent SFIC cores. All SFIC locks are sold less core.

*Use with Medeco Nextgen XT or VIDEX CyberLock SFIC cylinders.*

## Small Format IC Core ▼



## Schlage Full-Size IC Core

Olympus is the only manufacturer of cabinet locks that accept Schlage-style large format IC cores. We offer door and drawer deadbolt cabinet locks, cam lock and ratchet lock.

*Use with VIDEX CyberLock LFIC cylinders.*

## Full-Size IC Core ▼



## About Olympus Lock

Our mission is to create pin tumbler cabinet locks and accessories of unparalleled innovation, quality, keyway compatibility, and value in a manner which sets a new industry standard for excellence.

Our patented rekeyability features have created a new level of expectation for the cabinet lock industry.

Olympus manufactures the broadest assortment of pin tumbler keyways offered by any commercial cabinet lock company. We also provide engineered lock bodies to accept a wide range of third party cylinders. We are your single source for pin tumbler cabinet locks.

We are a customer driven organization with an emphasis on creating innovative products that meet the ever-changing needs of our customers both today and into the future. Our U.S. and Canadian patents prove our commitment to provide innovative solutions.

It has always been the intent of Olympus Lock to provide cabinet locks that are easy to install, use, and service. Each product is carefully designed and engineered at our Lynnwood, Washington headquarters and is manufactured to exacting specifications for function, fit and finish.

## Product Applications

Olympus cabinet locks can be used in a variety of applications. Some of the more common applications include: K-12 public schools, colleges and universities, prisons and jails, health care and hospitals, casinos, retail cash drawers, lockers, kiosks, retail showcases, airline ticket counters, museums, hotels/motels, amusement parks, theaters, restaurants and country clubs, libraries, airports, police stations, fire stations, and churches.



[www.medeco.com](http://www.medeco.com)

**ASSA ABLOY**

### Nextgen XT from Medeco

Medeco Nextgen XT is a retrofit electronic cylinder for small format interchangeable core (SFIC). The SFIC cylinder is ideal for loss and liability management as a direct replacement for mechanical cylinders. The easy system management allows for flexibility in access and the ability to monitor usage of keys. The cylinder is powered by the rechargeable key so no wiring is necessary. The small, sleek design of the key and the powerful cylinder is ideal for harsh environments. Flexible authorization, auditing of use, and quick retrofit to existing hardware are all in one convenient package. Medeco Nextgen XT cylinders will work with any Olympus SFIC cabinet lock.

*Medeco Nextgen XT SFIC cylinder — Small format interchangeable core will replace any Best, Arrow, Falcon or compatible cylinder with a Nextgen XT core.*

### NEXGEN XT SFIC Cylinder



Compatible with Olympus SFIC cabinet locks.

### M3 Logic from Medeco

M3 Logic merges the flexibility of electronics with reliable mechanical technology — all in a retrofit cylinder. M3 Logic offers end users audit trail, user access schedules, and the ability to quickly add or remove a key electronically from a system. M3 Logic installs with no wiring in a matter of minutes and digital keys and digital cylinders reprogram for instant changes.

*Medeco M3 Logic Key-in-knob — Key-in-knob cylinder will replace any Schlage or Schlage-compatible cylinder with a Medeco M3 Logic cylinder.*

### m<sup>3</sup>logic™



Key-in-knob

Compatible with Olympus large pin cabinet locks.

### Logic from Medeco

The Medeco Logic system (based on CLIQ technology) lets you to retrofit your standard mechanical key-in-knob cylinders with Medeco Logic cylinders allowing you to leverage the use of your existing hardware. The system offers convenience and security through digital masterkeying. Systems managers can program either cylinders or keys and system changes can easily be made real-time or by preprogrammed schedules. The Medeco Logic system also provides complete audit trail reporting. Medeco Logic cylinders are available in standard the key-in-knob format for use with Olympus cabinet locks.

*Medeco Logic Key-in-knob — Key-in-knob cylinder will replace any Schlage or Schlage-compatible cylinder with a Medeco Logic cylinder.*

### L | O | G | I | C™



Key-in-knob

Compatible with Olympus large pin cabinet locks.

Visit the Olympus Lock website [www.olympus-lock.com](http://www.olympus-lock.com) for complete information on all of our cabinet lock products.



[www.assacliq.com](http://www.assacliq.com)

**CLIQ from ASSA/ABLOY** The ASSA CLIQ technology is made possible by the miniaturization of the electronic components contained in both the keys and cylinders. The system is flexible, easy to use, and solutions can be applied to a wide range of applications. The system retains a high level of security despite upgrading, alterations or expansion by having the electronics in the key activate a small electric motor that drives an electromechanical blocking element that locks the side rail. All of these components are integrated into the lock cylinder and are well protected against manipulation. Software is used to provide audit trail functionality.

**ASSA CLIQ Key-in-knob** — Key-in-knob cylinder will replace any Schlage or Schlage-compatible cylinder with an ASSA CLIQ cylinder.



[www.videx.com](http://www.videx.com)

### CyberLock from Videx

The CyberLock system replaces standard mechanical lock cylinders with electronic cylinders allowing you to easily convert your existing mechanical locks into an electronic access control system. The CyberLock system includes electronic cylinders, CyberKeys and CyberSoftware that makes it easy to create a powerful system to track control access for every lock in your facility. CyberLock cylinders are available in three formats for use with Olympus cabinet locks.

**CyberLock SFIC** — Small format interchangeable core will replace any Best, Arrow, Falcon or compatible cylinder with a CyberLock cylinder.

**CyberLock LFIC** — Large format interchangeable core will replace any Schlage-style full-size IC core with a CyberLock cylinder.

**CyberLock Key-in-knob** — Key-in-knob cylinder will replace any Schlage or Schlage-compatible cylinder with a CyberLock cylinder.



**Key-in-knob**

Compatible with Olympus large pin cabinet locks.



**LFIC**



**SFIC**

**Key-in-knob**

Compatible with Olympus SFIC cabinet locks, Olympus full-size IC core cabinet locks, or Olympus large pin cabinet locks.



18424 Highway 99, Lynnwood, WA 98037  
206-362-3290 | 800-525-0954 | Fax 206-362-3569  
[www.olympus-lock.com](http://www.olympus-lock.com)

Copyright © 2011 Olympus Lock, Inc. all rights reserved. Other products and companies referred to herein are trademarks or registered trademarks of their respective companies or mark holders. Information in this document is subject to change at any time without notice. 08/11