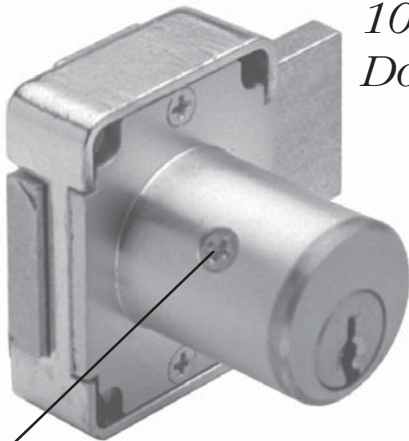


Product

100/200 Series

*Door & Drawer Cabinet Locks
National D4291 Keyway*

Data Sheet

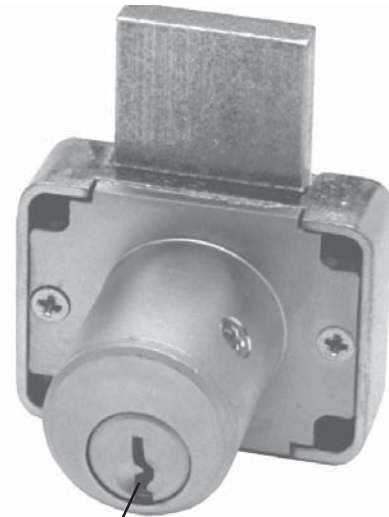


*100DR Series
Door Lock*

Cylinder retaining screw
For quick and easy rekeying



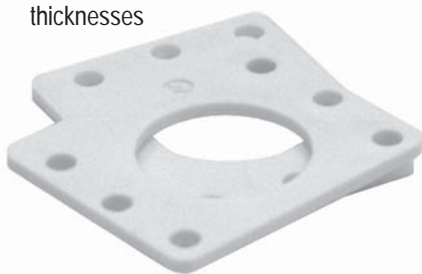
56-1
bar strike included



*200DW Series
Drawer Lock*

Solid brass cylinder

WP21 internal spacers
For a flush fit on varying material thicknesses



U.S. Patent Nos.
4,899,563; 4,920,774

OLYMPUS
LOCK, INC.

The cabinet lock innovators.

18424 Highway 99 • Lynnwood, WA 98037
Phone 206-362-3290 • Toll-free 800-525-0954 • Fax 206-362-3569
www.olympus-lock.com • info@olympus-lock.com

100/200 SERIES

Door & Drawer Cabinet Locks National D4291 Keyway



General Specifications

100 Series Cabinet Door Lock

Rekeyable: Easily rekeyable via patented set-screw cylinder removal mechanism

Certifications: ANSI A156.11, grade 1 cycle testing, all other requirements at grade 2

Body: Zinc die cast

Bolt: Brass, 3/4" projection

Barrel length: 7/8" or 1-3/8"

Barrel diameter: 7/8"

Finish: US26D (satin chrome) or US4 (satin brass)

Cylinder: National D4291 keyway

Keying: KD/KA (4 pin standard), stock KA

Nos. 101, 103, 107, 915. Master keying available (5 pin standard).

200 Series Cabinet Drawer Lock

Rekeyable: Easily rekeyable via patented set-screw cylinder removal mechanism

Certifications: ANSI A156.11, grade 1 cycle testing, all other requirements at grade 2

Body: Zinc die cast

Bolt: Brass, 3/4" projection

Barrel length: 7/8", 1-3/8" or 1-5/8"

Barrel diameter: 7/8"

Finish: US26D (satin chrome) or US4 (satin brass)

Cylinder: National D4291 keyway

Keying: KD/KA (4 pin standard), stock KA

Nos. 101, 103, 107, 915. Master keying available (5 pin standard).

Accessories

Includes:

- 56-1 bar strike

Available separately:

- WP21 plastic spacers
- 12-1, 12-2, 07S strikes
- TR1256 trim ring
- ETS2-125 - External trim spacer, 1/8" thick
- ETS2-250 - External trim spacer, 1/4" thick
- ETST2 - External trim spacer template

Reinforcing trim spacer (optional)

- External metal 1/8" or 1/4" trim spacers allows for an attractive flush mounting of the cabinet lock face
- Increases security of installation through reinforcement of cabinet face and direct connection of lock mounting screws to External Trim Spacer's binder posts
- Available in US3 and US26D finishes
- Includes mounting screws

Template for reinforcing trim spacer (optional)

- Allows for proper mounting hole placement of External Trim Spacer
- Can be used as a 1/8" shim spacer
- Available in US3 and US26D finishes

ETS2 Reinforcing Trim Spacer



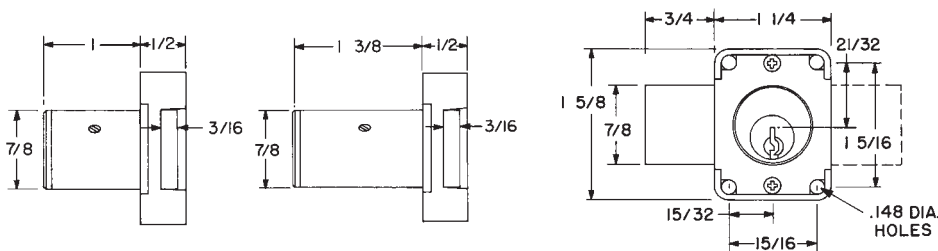
ETST2 Reinforcing Trim Spacer Template



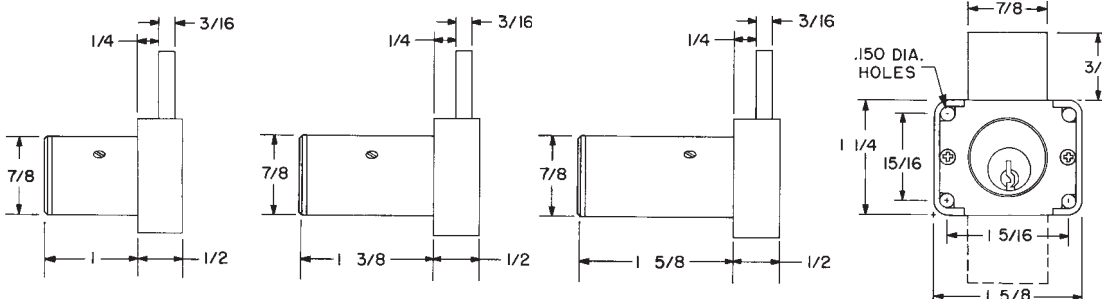
Optional trim spacers and templates can be used for through-bolt mounting of Olympus cabinet locks. Optional trim spacers and templates are available separately.

U.S. Patent No. D490,686

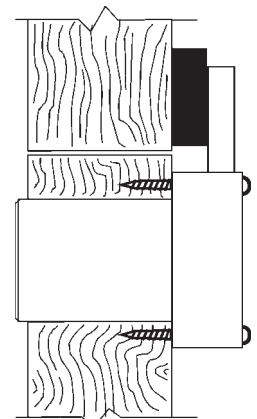
100 Series Dimensions



200 Series Dimensions



Typical Installation



100DR - top view
200DW - side view