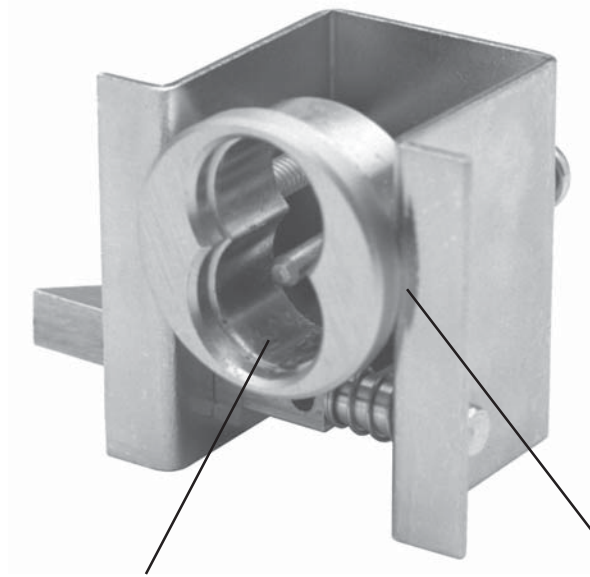


Product

728MBL Series

*Small Format IC Core
Mail Box Lock*



*Mail box lock for
metal mail box
applications*

Accepts Best-style
small format inter-
changeable core
(core not included)

Adjusts for varying
metal thicknesses

728MBL SERIES

Small Format IC Core Mail Box Lock



General Specifications

728MBL Series Mail Box Lock

Function: Mail Box lock, Fits most common mail box door designs

Handing: RH standard

Retrofits: Best 8L

Cores: Accepts Best, Arrow, Falcon, KSP, Schlage SFIC or equivalent small format interchangeable cores

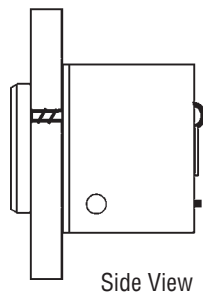
Material: Zinc die cast cylinder housing, steel body

Barrel length: Adjustable

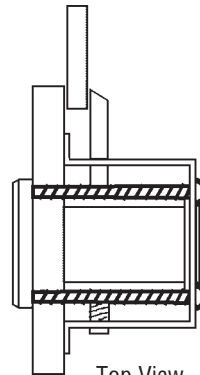
Finish: 26D

Packaging: Packed 10 per box

728MBL typical installation:



Side View



Top View

728MBL series dimensions:

