

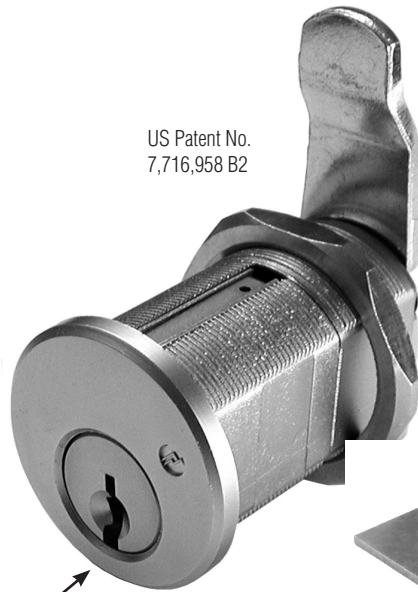
Product

820 Series

Large Pin Cam Lock

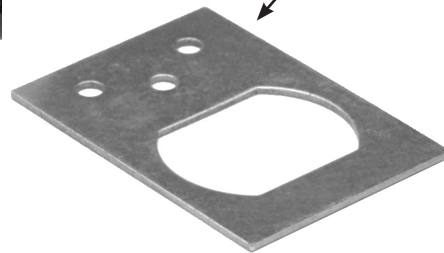
Data Sheet

US Patent No.
7,716,958 B2



Solid brass **Schlage C**
Keyway cylinder

720-PL3 Stabiizer
plate - keeps lock from
rotating in hole, traps
fixing nut



Less cylinder will accept
other Schlage compatible
key-in-knob cylinders.

Features:

- Stocked in Schlage C Keyway or less cylinder.
- Less cylinder locks accept other manufacturers Schlage-compatible key-in-knob cylinders.
- Includes all parts necessary to lock up, down, right or left and in key-retaining or non-key retaining function.

820 SERIES

Schlage C Keyway Cam Lock



General Specifications

820SC Series Cam Lock

Body: Zinc die cast

Body diameter: 1-1/8"

Mounting cutout: 1-5/32"

Max. material thickness: 1-3/8"

Min. material thickness: 0.08"

Across flats: 7/8"

Finish: US26D (satin chrome),
US3 (bright brass)

Cylinder: Schlage C keyway or less cylinder
(available in stock)

Stock keying: KD or KA - 5 pin standard, stock
KA# 101, 102

Master keying: 5 pin standard, KA/MK or
KD/MK, Grand Master Keyed

Accessories

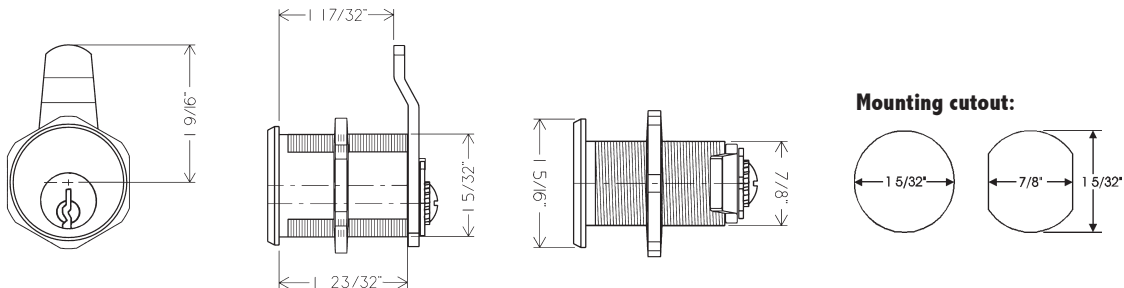
Includes:

- 720-PL3 stabilizer plate
- 720-3-1 short inverted cam
- 720-3-2 long vertical cam
- 720-CDLM lost motion cam shifter
- 720-CDDM key-retaining door cam shifter
- 720-KR key-retaining drawer cam shifter

Available separately:

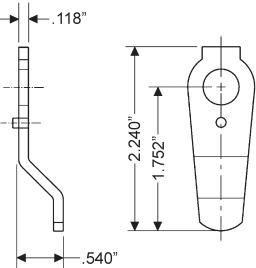
- 720-3-3 long offset cam for inverted function
- 720-3-4 extra long 3" straight vertical cam
- 720-3-5 long shallow offset cam for inverted function
- TR201 trim collar 1/8"
- TR202 trim collar 1/4"
- TR203 trim collar 3/8"
- TR200A trim collar package (contains TR201, TR202, and TR203)

820SC Series Dimensions

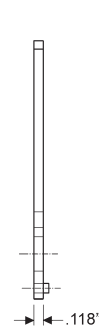


Available separately:

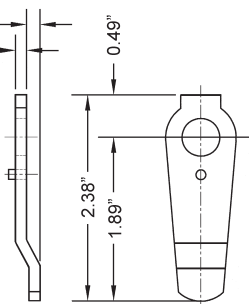
720-3-3
long cam
inverted



720-3-4
3" long cam
vertical



720-3-5
long cam
inverted
shallow
offset



TR201, TR202, TR203
Trim Collars

Ships standard with the following cams and cam shifters:



720-CDLM
lost motion cam
shifter



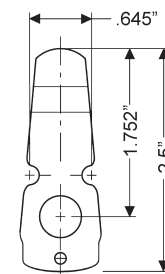
720-CDDM
key retaining door
cam shifter



720-KR
key retaining drawer
cam shifter



720-3-1
short cam
inverted



720-3-2
long cam
vertical

