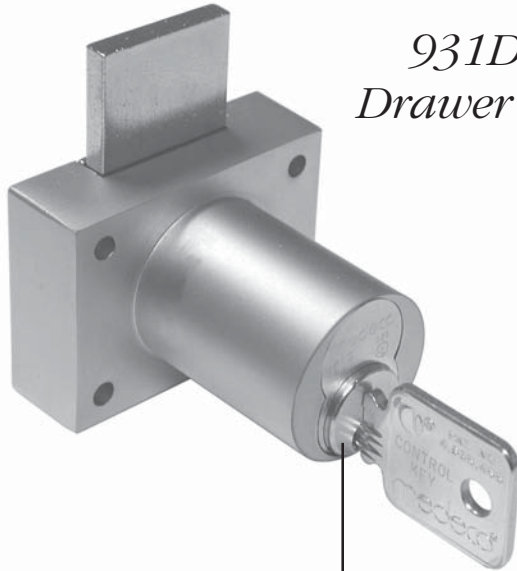


# Product

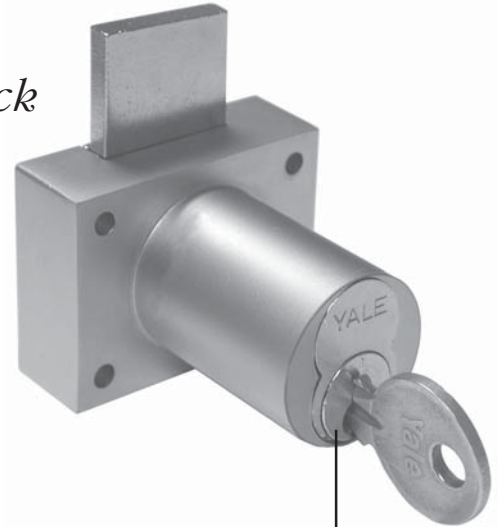
## 931 Series

Door & Drawer Cabinet Locks  
for Medeco/Yale IC Core

Data Sheet



931DW  
Drawer Lock



Accepts Medeco  
or Yale IC Core  
Cylinders



10-054 bar strike 1/4"  
1/4" plastic bar strike



10-055 strike  
1/2" plastic bar strike

**Medeco cylinder:** Not included, accepts Medeco #32-0201 (6-pin) IC core cylinder.

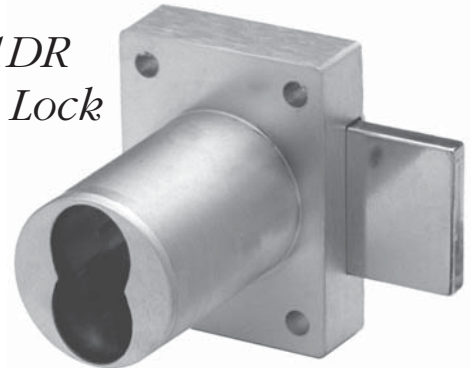
**Yale cylinder:** Not included, accepts Yale 1210 Series (6-pin) IC core cylinder.

**ASSA cylinder:** Not included, accepts ASSA's Yale 6-pin compatible large format IC core cylinder.



10-350 internal spacers  
For a flush fit on varying material thicknesses

931DR  
Door Lock



**OLYMPUS**  
LOCK, INC.

*The cabinet lock innovators.*

18424 Highway 99 • Lynnwood, WA 98037  
Phone 206-362-3290 • Toll-free 800-525-0954 • Fax 206-362-3569  
www.olympus-lock.com • info@olympus-lock.com

# 931 SERIES

Door & Drawer Cabinet Locks  
for Medeco/Yale IC Core



## General Specifications

### 931DR Cabinet Door Lock

**Function:** Key removable in locked or unlocked position. \*Key-retaining function is available.

**Application:** Door lock (non-handed)

**Body:** Zinc die cast

**Bolt:** Brass, 15/16" projection

**Door thickness:** Fits up to 1-3/8" doors

**Barrel diameter:** 1-1/8"

**Finish:** US26D or US3

**Medeco cylinder:** Not included, accepts Medeco #32-0201 (6-pin) IC core cylinder.

**Yale cylinder:** Not included, accepts Yale 1210 Series (6-pin) IC core cylinder.

**ASSA cylinder:** Not included, accepts ASSA's Yale 6-pin compatible large format IC core.

### 931DW Cabinet Drawer Lock

**Function:** Key removable in locked or unlocked position. \*Key-retaining function is available.

**Application:** Drawer lock (non-handed)

**Body:** Zinc die cast

**Bolt:** Brass, 15/16" projection

**Drawer thickness:** Fits up to 1-3/8" drawers

**Barrel diameter:** 1-1/8"

**Finish:** US26D or US3

**Medeco cylinder:** Not included, accepts Medeco #32-0201 (6-pin) IC core cylinder.

**Yale cylinder:** Not included, accepts Yale 1210 Series (6-pin) IC core cylinder.

**ASSA cylinder:** Not included, accepts ASSA's Yale 6-pin compatible large format IC core.

#### Includes:

- 10-350 plastic spacers (qty 3)
- 10-054 1/4" plastic bar strike
- 10-055 1/2" plastic bar strike
- 931-1 spacer for Medeco 6-pin core
- 931-PA plastic actuator to functionally test lock without core

#### Available separately:

- 10-352 slotted strikes
- TR78 trim ring

#### ETS1 Reinforcing trim spacer (optional)

- ETS1-125 - 1/8" thickness
- ETS1-250 - 1/4" thickness
- The external metal reinforcing trim spacer allows for an attractive flush mounting of the cabinet lock face
- Increases security of installation through reinforcement of cabinet face and direct connection of lock mounting screws to External Trim Spacer's binder posts
- Available in US3 and US26D finishes
- Includes mounting screws

#### ETST1 Reinforcing trim spacer template (optional)

- Allows for proper mounting hole placement of External Trim Spacer
- Can be used as a 1/8" shim spacer
- Available in US3 and US26D finishes

ETS1 Reinforcing Trim Spacer

ETST1 Reinforcing Trim Spacer Template



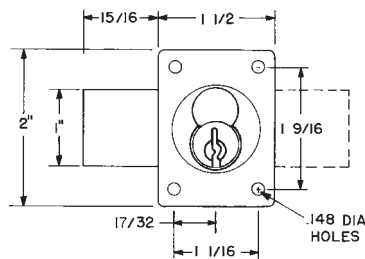
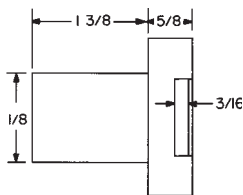
U.S. Patent No.  
D490,686 S

Trim spacers and templates can be used for through-bolt mounting of Olympus cabinet locks. Optional trim spacers and templates are available separately.

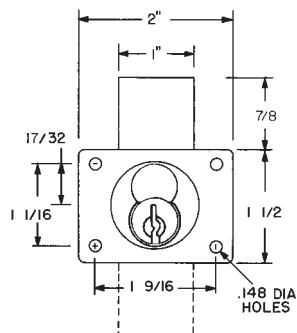
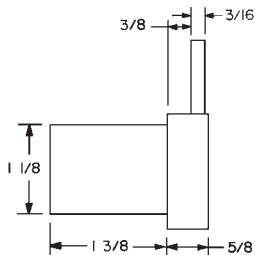
Part no:	Function	List Price Ea.
931DR-26D	Door	\$52.31
931DR-US3	Door	\$52.31
931DR-KR-26D	Door-KR*	\$57.31
931DR-KR-US3	Door-KR*	\$57.31
931DW-26D	Drawer	\$52.31
931DW-US3	Drawer	\$52.31
931DW-KR-26D	Drawer-KR*	\$57.31
931DW-KR-US3	Drawer-KR*	\$57.31

\*Key retaining: Key removable in locked position only.

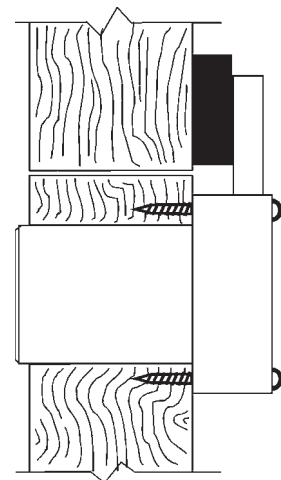
## 931DR Series Dimensions



## 931DW Series Dimensions



## Typical Installation



931DR - top view  
931DW - side view