

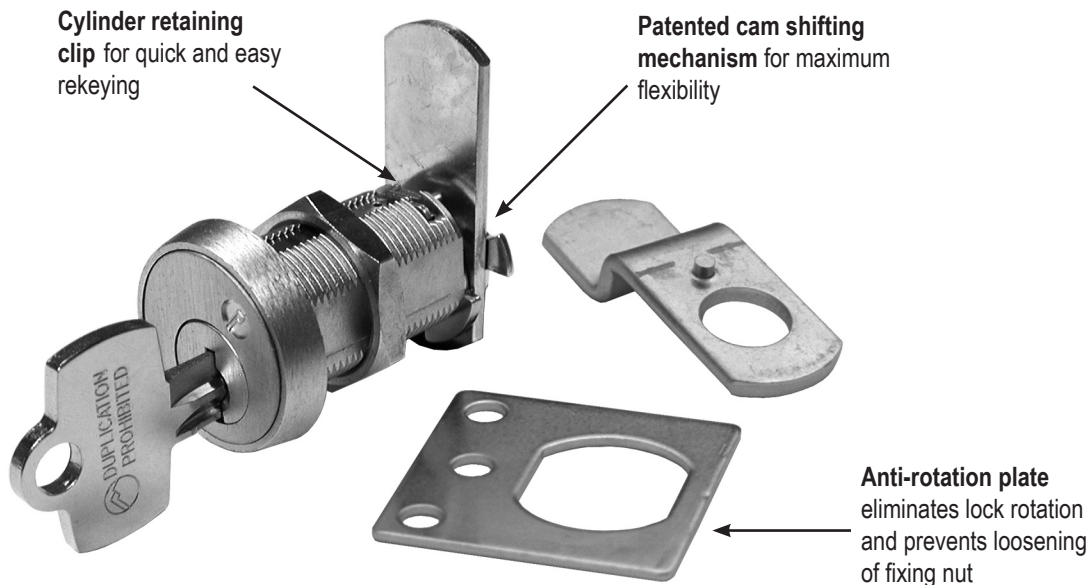
Product

B7 Series

*3/4" Cam Lock
with Best Keyways*

NEW!

U.S. Patent No.
5,737,950



Data Sheet

B7 Series Features:

1. **Cylinder**—7 pin cylinder available in A, E, F, G or J keyways
2. **Easy rekeyability**—allows for a quick installation and increased productivity
3. **Non-handed**—field reversible locking positions: right-hand, left-hand, vertical and inverted
4. **Only 2 cams required**—ships with reversible straight and offset cams that meet requirements of all locking positions
5. **Anti-rotation plate**—eliminates lock rotation, prevents loosening of fixing nut, and provides additional security in particleboard applications
6. **Finger pull**—optional finger pull eliminates need for additional cabinet pull, mounts on front of lock
7. **Lost motion**—key removable in locked or unlocked position, optional key-retaining shifters available
7. **Number plate kit**—Optional number plate kit allows stamping on ring instead of lock face

**Currently available:
A, E, F, G, J, K & L
keyways**

OLYMPUS
LOCK, INC.
The cabinet lock innovators.

18424 Highway 99 • Lynnwood, WA 98037
Phone 206-362-3290 • Toll-free 800-525-0954 • Fax 206-362-3569
www.olympus-lock.com • info@olympus-lock.com

B7 SERIES

Utility Cam Lock with Best Keyways



General Specifications

B7 Series Cam Lock

Rekeyable: Easily rekeyable via patented retainer staple cylinder removal mechanism

Body: Zinc die cast

Barrel length: See chart below

Barrel diameter: 3/4"

Across flats: 5/8"

Finish: US26D (satin chrome)

Cylinder: Best A, E, F, G or J keyway, drilled for 7 pins

Stock keying: O-Bit

Custom Keying: Available per customer specifications.

Includes:

DCNP-500-ARP stabilizer plate

DCNP-100-SC straight cam

DCNP-100-BC offset reversible cam

DCNP-200-OCD lost motion cam shifter

Available Separately:

DCNP-200-KR key retaining drawer

cam shifter

DCNP-200-KDR key retaining door

cam shifter

DCNP-100-LC long 3" straight cam

DCNP-100-LBC long offset cam

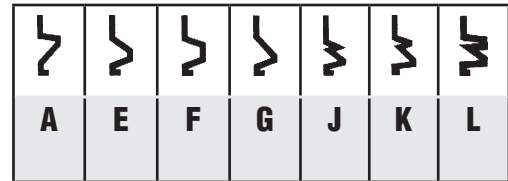
DCNP-100-BC5 1/2" offset cam

DCNP-100-WB short cam

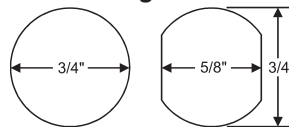
DCNP-300-FP finger pull

T37-NKIT Number plate ring kit

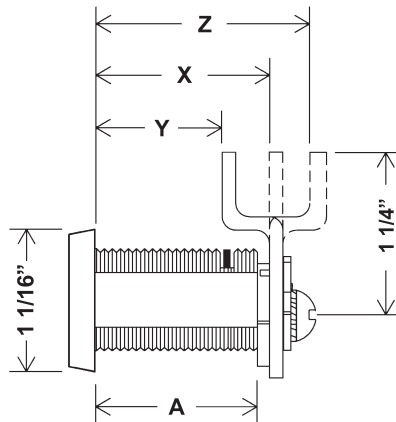
Available keyways



Mounting cutout



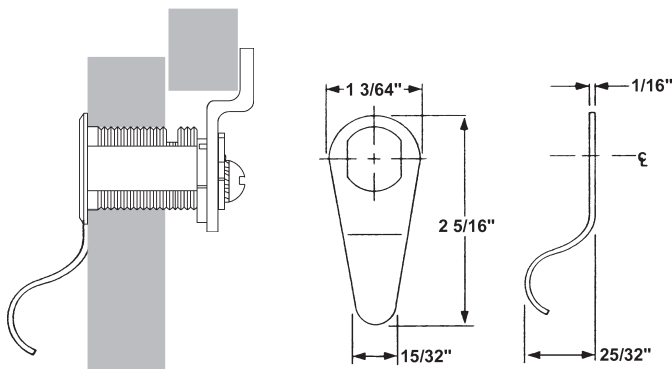
B7 Series Dimensions



With Trim Collar	
For Mat. Thickness	7/8"
Straight Cam (X)	1-3/16"
Inbent Cam (Y)	7/8"
Outbent Cam (Z)	1-1/2"
Cylinder Length (A)	1-1/8"

DCNP-300-FP

Eliminates need for additional cabinet pull.
Mounts on front of cam lock.



Typical Installations

