

Product

CR1125 Series

*Door & Drawer Locks for
Corbin/Russwin IC Cores*

Data Sheet



*CR1125
Rim, Deadbolt,
Left-hand*



*CR1125
Rim, Latchbolt,
Vertical-hand*



Includes plastic
actuator to functionally
test lock without core

*CR1125 Series lock bodies accept 6 or 7 pin
Corbin/Russwin interchangeable cores
(core not included)*

- *Surface (rim) mount*
- *Deadbolt: Door (Right-hand or Left-hand), & Drawer (Vertical)*
- *Latchbolt: Drawer (Vertical)*
- *Includes matching strike plate*

CR125 SERIES

Door & Drawer Locks for
Corbin/Ruswin IC Cores



General Specifications

CR125 Series Door & Drawer Locks

Body: Zinc die cast cylinder housing, stamped steel back plate and steel case

Barrel diameter: 1-5/32"

Max. material thickness: 1-1/16"

Compatibility: Retrofits Best 5L Series

Finish: US26D (satin chrome)

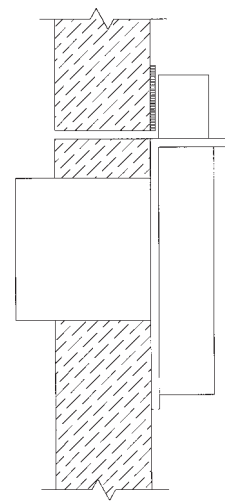
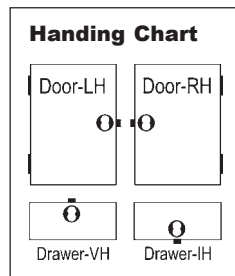
Cylinder: not included, accepts Corbin/Ruswin IC cores (core not included)

Keying: n/a

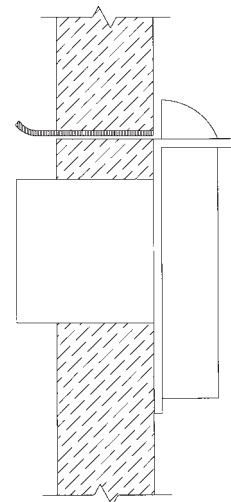
Accessories

Includes:

- 725-PA plastic actuator
- 1125-1 spacer for 6 pin cores
- 725-SP series matching strike plate



Rim Deadbolt
CR1125RD



Rim Latch
CR1125RL

CR125 Series Dimensions

