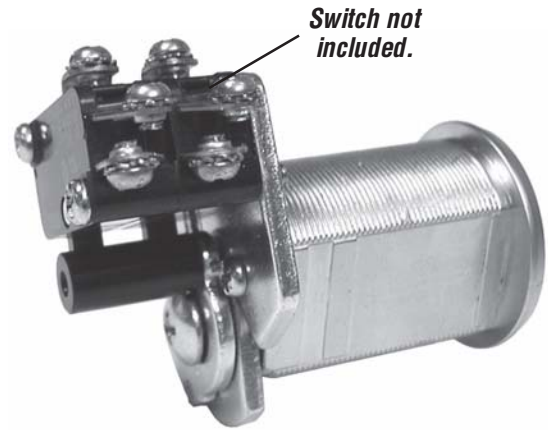
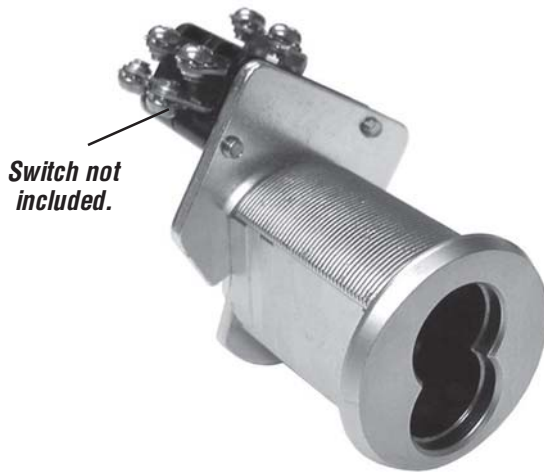


# Product

## SW-1

**Switch Accessory Pack (switch not included)  
For 720, 820 or 920 Series Cam Locks**



- Includes parts to convert Olympus Lock 720, 820 or 920 Series cam locks into switch locks.
- Accepts pin plunger style, snap acting, miniature switches.
- Switch manufacturers: Omron, Honeywell, Cherry, Panasonic or C & K.
- See the reverse side for a complete list of available switches for use with the SW-1.

**The SW-1 may be used with the  
following Olympus products:**



**720LM/DM**  
Small Format  
IC Core



**820SC/820LC**  
Schlage C Keyway  
or Less Cylinder



**920LM/DM**  
Schlage Large  
Format IC Core

# SW-1

## Switch Accessory Pack (switch not included) For 720, 820 or 920 Series Cam Locks

### General Specifications

#### SW-1 Accessory Pack

- Includes parts to convert 720, 820, or 920 Series cam locks into switch locks
- Switch not included
- Accepts pin plunger style, snap acting, miniature switches
- Allows stacking of up to 2 switches

#### Manufacturers

- Omron - V Series
- Honeywell (MicroSwitch) - V Series
- Cherry - E Series
- Panasonic (Aromat) - ABV Type
- C&K (ITT) - TM & TF Series

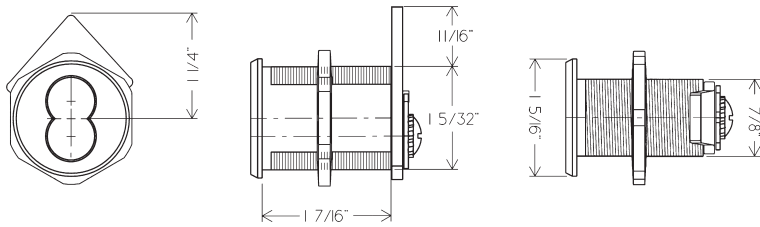
#### Common Suppliers

- Newark Electronics 800-463-9275
- Allied Electronics 866-433-5722
- McMaster-Carr 562-463-4277

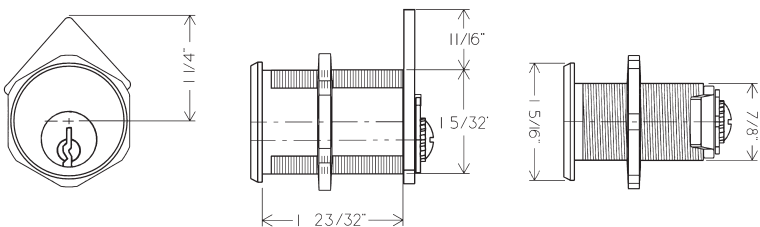


Switch not included.

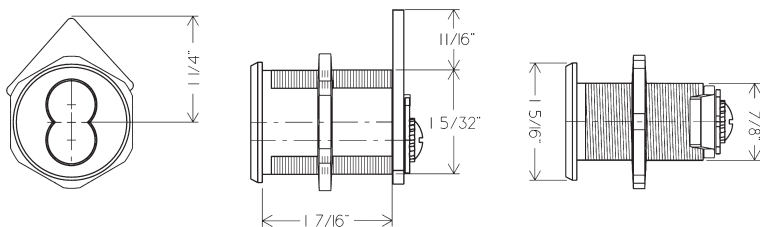
### 720LM/DM Series Dimensions



### 820SC / 820LC Series Dimensions



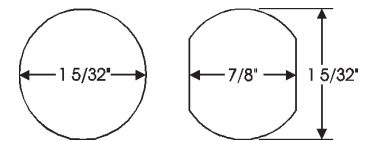
### 920LM/DM Series Dimensions



### SW-1 Accessory Pack



#### Mounting cutout:



**TR201, TR202, TR203**  
Trim Collars  
Available separately