



The Olympus News

We are your cabinet lock innovators.

October 2007

A publication of
Olympus Lock, Inc.

Looking for that hard to find key code for LeFebure, Diebold or Mosler? Look no further!

Introducing... The **T37 Series T-bolt Lock**
*The industry's first easily rekeyable T-Bolt lock
for metal bank drawers.*

**Coming 2nd
Quarter 2008!**

IN THIS ISSUE

New! T37 T-Bolt Lock

Our newest items in
stock now!

Notable projects

Display boards

Current Literature

Directly replaces National C8137!

Keyway: Available in National D4291 (4-pin) keyway. KA, KD or MK.

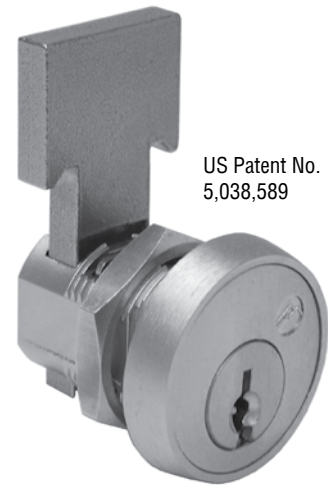
Rekeyable: Working top-slide, patented "cylinder retainer staple" and removable bezel ring make rekeying fast and easy. No more need to pry off faceplates and pin retainer clips.

Stronger bolt: Our stainless steel bolt will withstand repeated abuse without breaking.

Retrofits: National C8137.

Mounting: Ships standard with brass fixing nut.

Spring clip: Optional spring clip is available for clip mounting if desired. The lock comes standard with clip mounting locations for 0" to 11/64" material thicknesses.



US Patent No.
5,038,589

T37 Series - T-Bolt Drawer Lock (4 pin tumbler)

Part No.	Finish	Cyl. Length	For Material	Keying	List Price Ea.
T37	26D	19/32"	1/4"	KA* or KD Custom, master keyed	\$23.15 \$25.43
T37-RC	Optional spring mounting clip				\$1.10

*KA Nos. 101,103,107,915 and 001 through 030. Other codes available via custom keying.

OLYMPUS LOCK, INC.

18424 Highway 99
Lynnwood, WA 98037
206-362-3290
800-525-0954
Fax 206-362-3569
www.olympus-lock.com
info@olympus-lock.com

In stock at Olympus!

931 Features & Benefits

- Accepts Medeco, Yale & Assa's Yale-compatible 6 pin IC cores.
- Locks are sold less core.
- Includes 3 ea. #10-350, 1/8" plastic spacers to fit various material thickness
- Includes 1 ea. #10-054, 1/4" bar strike and 1 ea. #10-055, 1/2" bar strike.
- Each lock includes plastic actuator to functionally test lock without core.

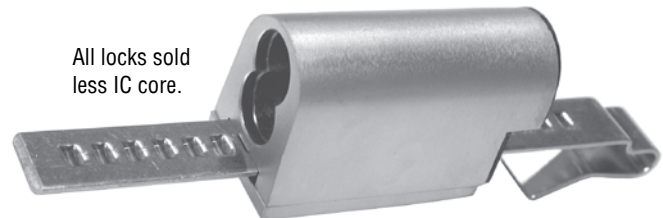


931 Series

The 931 Series door and drawer cabinet locks accept Medeco, Yale and ASSA's Yale compatible 6-pin interchangeable core cylinders. These locks allow you to key your cabinets into your new or existing Medeco or Yale door hardware system.

729R Features & Benefits

- True ratcheting function! No key required to relock doors.
- Alternate straps fit a variety of material thicknesses.
- The straps #1 (included) and #2 can be clamped on or our alternate strap #3 can be secured by the use of two set screws.
- Overhang on back of lock prevents prying doors apart.
- Each lock includes plastic actuator to functionally test lock without core.



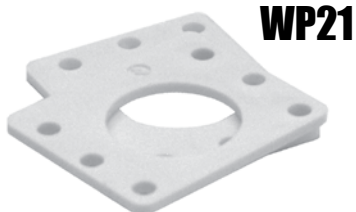
729R Ratchet Lock

This SFIC sliding door ratchet lock accepts Best, Arrow, Falcon or compatible small format interchangeable cores. Optional straps 729RS-2 and 729RS-3 add flexibility to this product.

Small Pin Plastic Spacers

For use with 7/8" diameter cabinet locks.

- WP21 - 13/32" thickness
- WP22 - 1/4" thickness
- WP23 - 1/2" thickness



Notable Projects: Allenmore Hospital, Wynn Macau, Navy Pier

Allenmore Hospital/Medical Center

Located in Tacoma, Washington, the new Allenmore C Building is now open. This new, state-of-the-art medical building will provide patients easier access to a variety of services, including full imaging capabilities, laboratory services and our Breast Health Center. Clinics that will now be located in the new Allenmore C Building include Tacoma Central Internal Medicine, Allenmore Internal Medicine and Tacoma Central Family Medicine. Cedar Surgical Associates also will relocate to Allenmore C.

The new Allenmore C Building used over 1,900 pieces of our Olympus Lock 100DR and 200DW locks.



Wynn Macau

The new Wynn Macau is owned by Wynn Resorts and is a luxury integrated resort in Macao, People's Republic of China, offering gaming combined with a deluxe hotel, restaurants, designer shops, spa, and a performance lake. The first phase of Wynn Macau features 600 hotel rooms and suites, around 212 table games and 375 slot machines in approx 100,000 square feet of casino gaming space, gourmet restaurants, 26,000 square feet of retail space, a spa, salon, entertainment lounges and meeting facilities. It opened on September 6, 2006.

Olympus is proud to provide the cabinet locks that are specified in all new Wynn properties.

Navy Pier - Chicago

Navy Pier is located on Lake Michigan, just East of Chicago's Downtown, and has been a Chicago landmark since it first opened in 1916. Originally designed as both a shipping and recreational facility, the Pier also served as a military training site during two world wars, a venue for concerts and exhibitions, and the temporary home for a once-fledgling University of Illinois' Chicago campus.

The Pier fell into disuse during the 1970s and 1980s, and in 1989, ownership of the Pier was transferred to the Metropolitan Pier and Exposition Authority. Shortly after, Navy Pier was redesigned into one of the country's most unique recreation and exposition facilities, and now showcases a unique collection of restaurants, shops and unequalled recreational and exhibition facilities.

Olympus Lock was proud to be part of this project.



Olympus Display Boards / Literature

Olympus Display Boards

Olympus FDB Series “free-standing” display boards are available for purchase. See current price list for pricing. We offer four versions:



FDB-001

Sampling of our major product families: small pin, large pin, and IC core.



FDB-002

Includes a sampling of our small pin locks in National and/or CCL keyways.



FDB-003

Sampling of our large pin and/or Schlage large format interchangeable core locks.



FDB-004

Sampling of our small format interchangeable core locks.

Current Literature

Contact your Olympus Lock representative, call Olympus directly at 800-525-0954 or email info@olympus-lock.com for the most recent version of our catalogs, price list or poster.

Full line catalog: July 2007

Condensed catalog: June 2007

Price list: July 1, 2006, Revision 1

Poster: 2006

Business Hours

7:00 am to 4:00 pm Pacific Time.

Copyright © 2007 Olympus Lock, Inc.

Olympus Lock, Inc.
PO Box 1277
Lynnwood, WA 98046